

INSTALLATION MANUAL & OPERATION INSTRUCTIONS

2 POST LIFT PSE 12,000 BP

INSTALLATION Manual

PSE 12,000 BP

(Push Button Controls With Key Security Box)

Heavy-Duty Symmetric 2 Post Lift
12,000 LB. Capacity

Call Your Distributor Today!
EXTENDED WARRANTY
Protect Yourself For An
Additional 12 Months
Contact Distributor For Details!
Warranties Go Away
Equipment Stays!

LIFT FEATURES:

- Commercial Grade
- Symmetric Lift
50/50 Lift!
- Only 9'2" Tall
- 2 Hydraulic Cylinders
- Rubber Door Guard
- Solenoid Controlled Release Valve
- Telescoping Screw Pads
- **5 YEAR LIMITED WARRANTY**
- More Lifts Available!



Thank You For Your Purchase!

We reserve the right to make changes in specifications without notice and without making changes retroactive.



READ THIS MANUAL COMPLETELY BEFORE INSTALLING LIFT!!! KEEP THIS MANUAL NEAR THE MACHINE AT ALL TIMES AND MAKE SURE ALL USERS HAVE READ THIS MANUAL BEFORE OPERATING THIS MACHINE.

PRO-SERIES Equipment

www.ProSeriesEquipment.com

P.O. Box 734
Franklin, Indiana 46131
1-800-708-2988

Email: Sales@ProSeriesEquipment.com

INFORMATION ABOUT THIS LIFT:

2 Post Lift: PSE 12,000 BP
INSTALLATION manual

Model No.:	PSE 12,000 BP
Capacity:	12,000 lbs.
Serial No.:	
Installation Date:	
Distributor:	
Dist. Phone Number:	
Installer:	
Installer Phone Number:	



**INSTALLATION & MAINTENANCE
MANUAL FOR YOUR AAP TWO-POST
“PSE 12,000 BP” VEHICLE LIFT!**

(12,000 POUND MAXIMUM CAPACITY)

(Catalog Number: PSE 12,000 BP)

TABLE OF CONTENTS

READ THIS BEFORE INSTALLING THE LIFT 2-3

TOOLS FOR INSTALLATION..... 3

SHIPPING & PARTS BOX..... 4

SPECIFICATIONS 5-6

LAYOUT DRAWING & CONTROL BOX..... 7

INSTALLATION INSTRUCTIONS 8-21

GENERAL SAFETY INSTRUCTIONS..... 22

LIFT OPERATING INSTRUCTIONS 22

SAFETY & OPERATION INSTRUCTIONS 23

MAINTENANCE SCHEDULE..... 24-25

TROUBLESHOOTING 26

LIFT WARRANTY 27

DIAGRAMS & ILLUSTRATIONS 8-18

LIFT WARRANTY ACTIVATION FORM 29



**READ THIS MANUAL
COMPLETELY BEFORE
INSTALLING LIFT!!!**

DISTRIBUTED BY:

PRO SERIES EQUIPMENT

1-800-708-2988

Web: www.ProSeriesEquipment.com

E-mail: Sales@ProSeriesEquipment.com

Thank you for purchasing an Electro-Hydraulic Lift from the Advance Auto Parts product line. This Lift has been constructed to the best quality safety standards. This manual is made in order to supply the owner, as well as all operators & users, with the basic instructions for the correct use of this lift. It is important that the owner, installers, and all users adhere to the guidelines set forth in this manual to ensure the correct, safe, use of this equipment, as well as ensure a long functional life for this product as well. It is recommended that this product is installed by a PSE authorized installer.

Read this guide with the utmost care before using the lift. This guide contains the instructions for installation, use and maintenance of our PSE 12,000 BP hydraulic two post lift systems.

Keep this guide as well as all other supplied technical literature in a safe place close to the Lift in order to allow users to consult it whenever necessary. The technical literature is an integral part of the Lift and it must always be kept with the product, especially in case of sale.

Again, follow the directions given by this guide with the utmost attention: the Manufacturer declines all responsibility for any damage due to negligence and non-observance of the instructions found within this manual. The non-observance of herewith-contained instructions will automatically involve the immediate lapse of warranty.

1.1 Intended Use

This Two-Post Lift is suitable for lifting motor vehicles having a maximum total weight of 12,000 lbs. (PSE 12,000 BP). It is necessary to respect the parameters given by the "LOAD DISTRIBUTION CHART" (as foreseen by standard, EN 1493/98)

This appliance must only be used for which it is expressly designed. It is forbidden to lift people or other equipment not specified in this guide.

Any other use is to be considered improper and irrational and thus highly forbidden. The Manufacturer cannot be held responsible for any damage or injury caused by an improper use or by the non-observance of the following instructions:

- ⊗ DO NOT INSTALL the Lift in windy sites or a potentially explosive room.
- ⊗ The Lift, is not intended for outdoor use. In this case it is necessary to ask the constructor for a special version.
- ⊗ For any installation to be made in a site different than what is specified, ask for the Manufacturer's advice. Failure to get written authorization to install a Lift in any way not described within this manual will result in the immediate termination of the Lift's Warranty!
- ⚠ The technical literature is an integral part of the Lift. Read this guide carefully before using the Lift, because it contains very important safety rules for use and maintenance.

**KEEP THIS AS WELL AS ALL OTHER SUPPLIED
TECHNICAL LITERATURE IN A SAFE PLACE
AND CONSULT WHENEVER NECESSARY.**

READ THIS BEFORE INSTALLING THE LIFT!

Improper installation can cause injury or damage!

1. **Read this installation and operation manual in its entirety before attempting to install the Lift.** Manufacturer or Distributor assumes no responsibility for loss or damage of any kind, expressed or implied, resulting from improper installation or use of this Lift. Always use a PSE Authorized Lift Installer to install your Lift.
2. All persons using this equipment must be responsible, qualified, and carefully follow the operation and safety guidelines contained in this manual.
3. A level floor is required for proper Lift installation and operation.
4. **DO NOT** install this Lift on any asphalt surface. Only on concrete surface that is a minimum of 4" - 6" thick and 3,000 psi tensile strength with steel or fiber mesh reinforcement. A Lift can only be as strong as its foundation!
5. **DO NOT** install this Lift over concrete expansion joints or cracks. (Check with your building architect.)
6. **DO NOT** install this Lift on an upper floor without written authorization from your building architect. This Lift should only be installed on the ground / basement floor.
7. **DO NOT** attempt to Lift only part of a vehicle. This Lift is intended to raise the entire body of a vehicle only. Lifting only part of a vehicle will bend the Lifting Arms and void the Lift's Warranty.
8. **NEVER** Lift any persons or vehicles containing persons. This Lift is designed to lift empty vehicles only.

TOOLS FOR INSTALLATION

Concrete Rotary Hammer Drill with 3/4" inch Carbide Bit
Rubber Hammer & Sledge Hammer (2 lb.)
Chalk Line & Square for creating a layout drawing
Sockets and Open End Wrenches
Ratchet Driver
Locking Pliers
Measuring Tape
Screwdrivers
Torque Wrench
Step Ladder
4' Foot Bubble Level
12" Inch Adjustable Wrench
AW – 32 Non-Foaming Non-Detergent Hydraulic Fluid (3 gallons) or ATF Equivalent

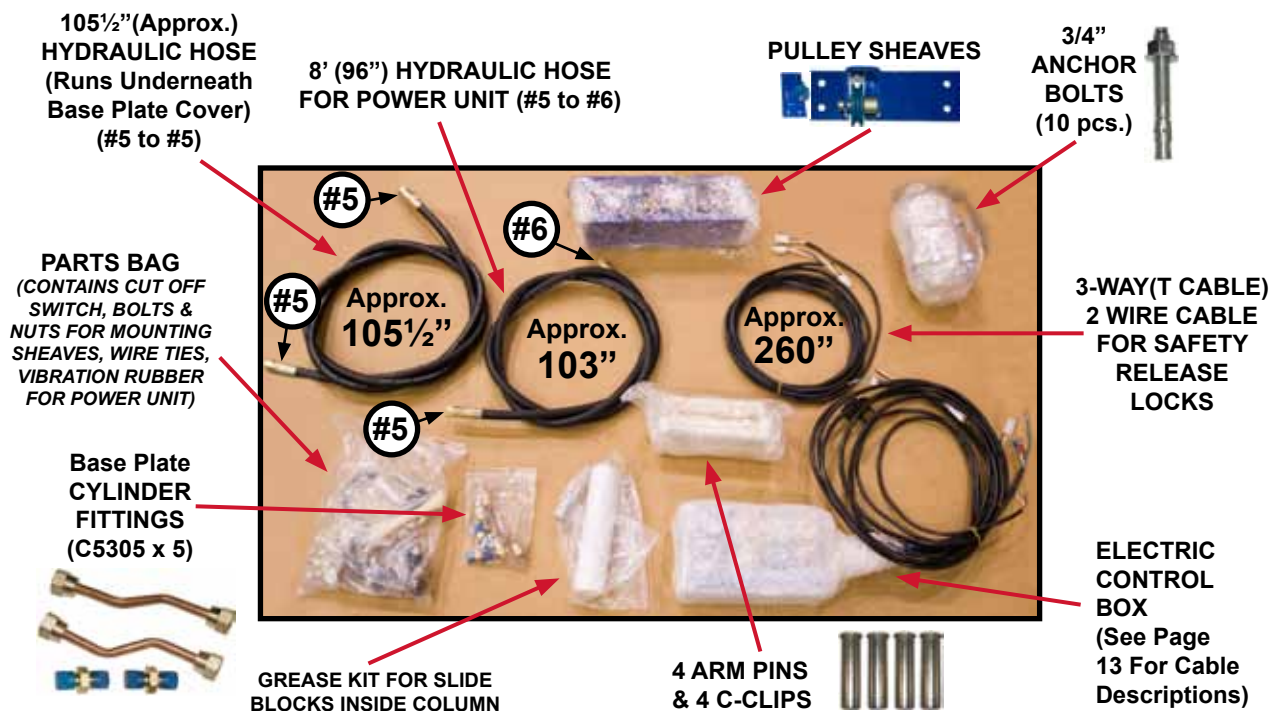
Shipping Container Contents



After removing the wrapping on your lift, you will find these components:

- 2 Posts (attached to End Plates - used for shipping only)
- 1 Base Plate
- 2 Two Stage Short Arms
- 2 Two Stage Long Arms
- Parts Box (contents listed below)

Parts Box Contents



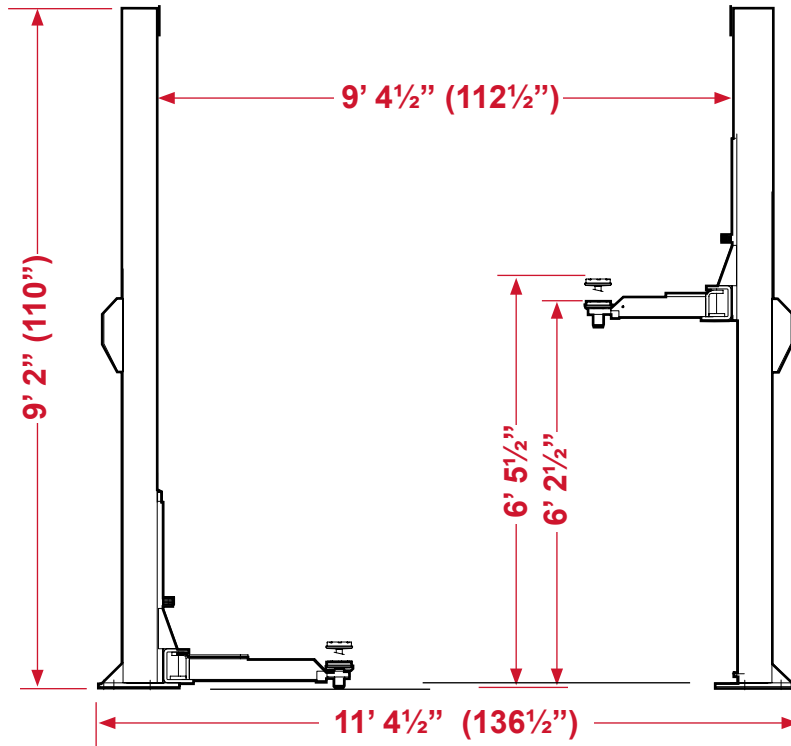
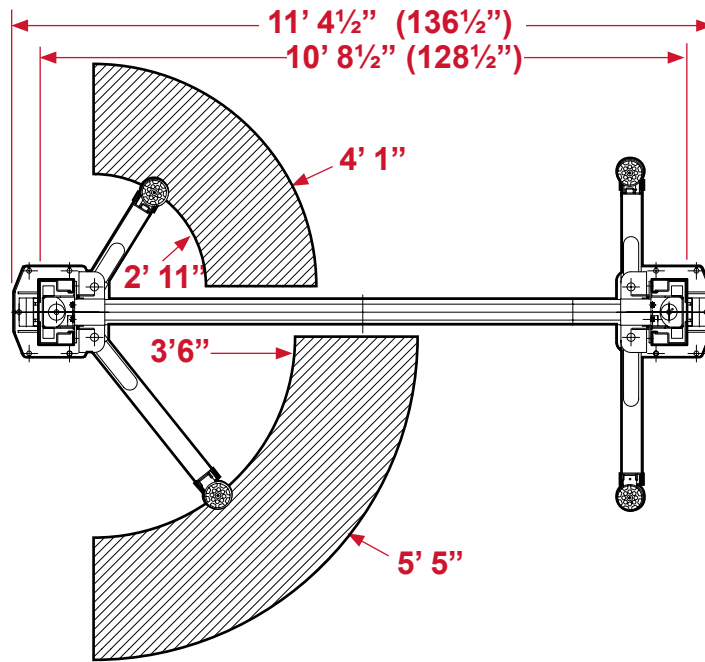


FIGURE 1 (Specifications Drawing)

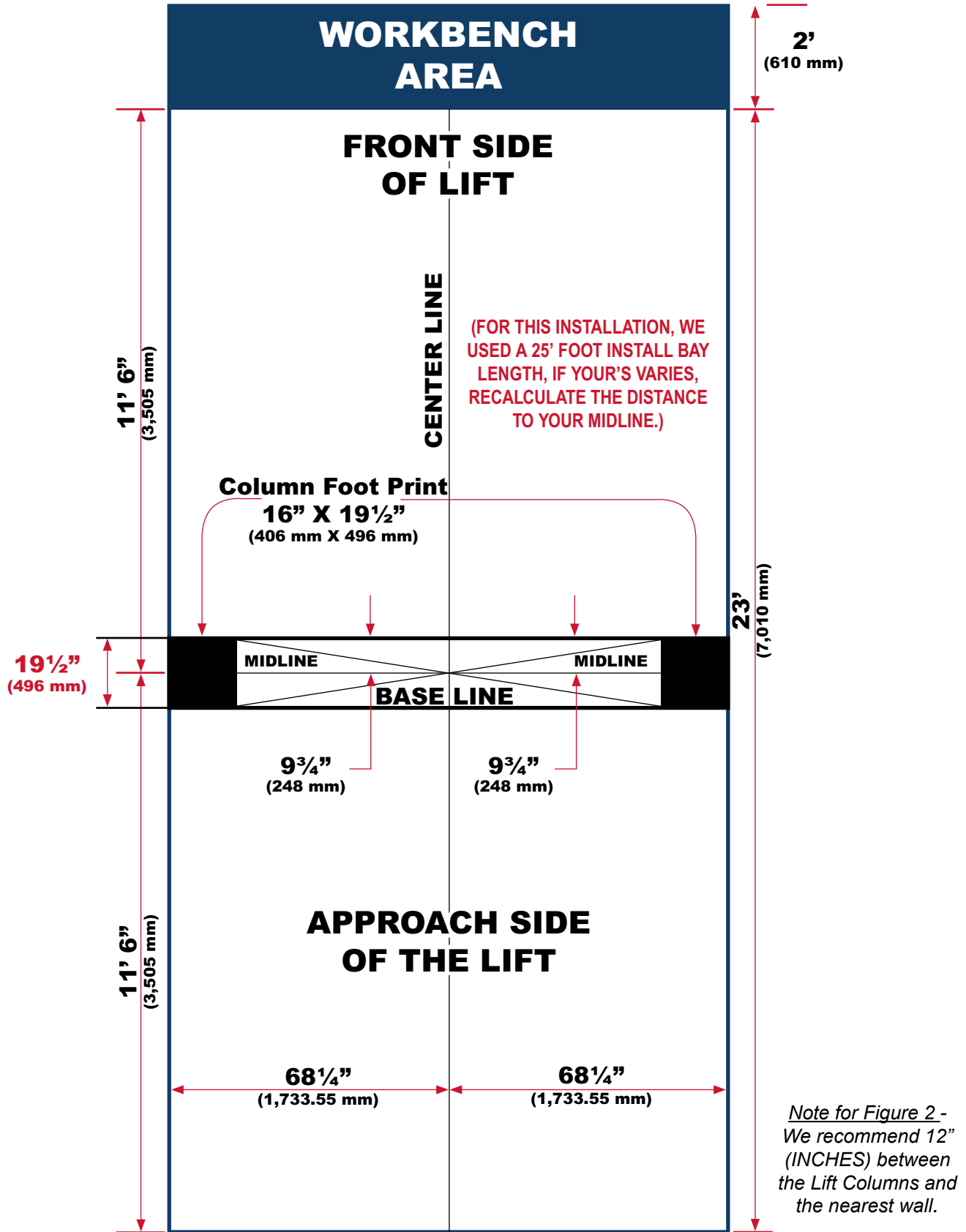
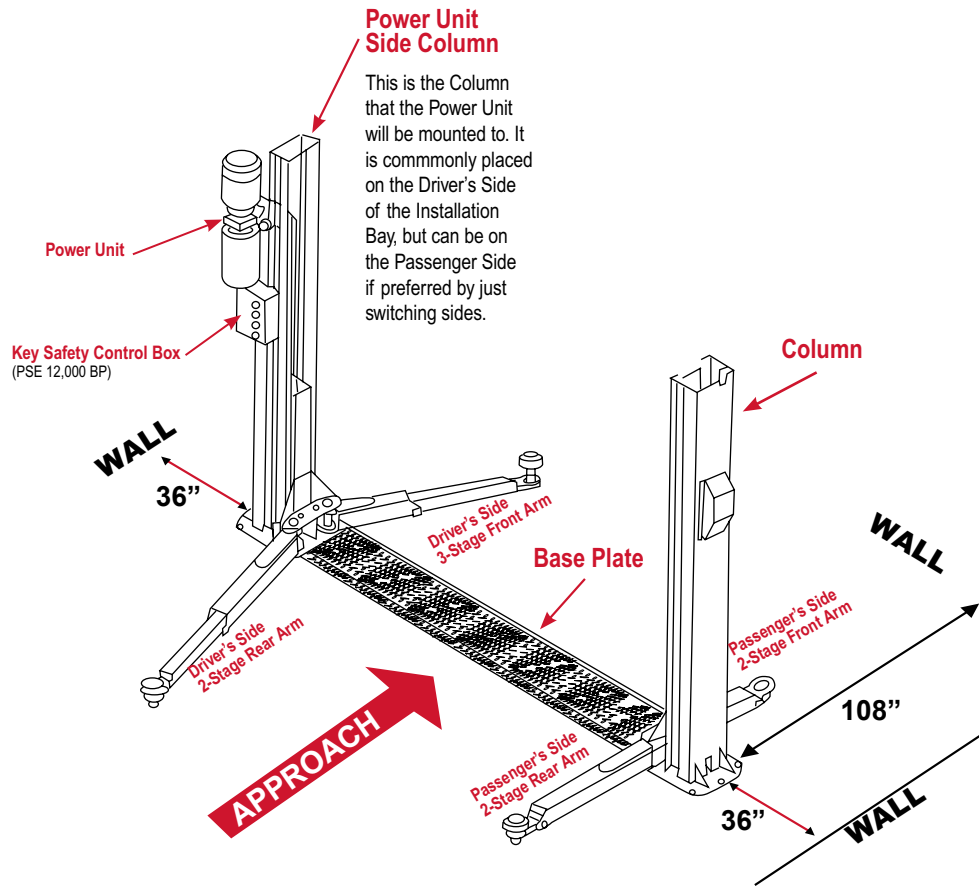
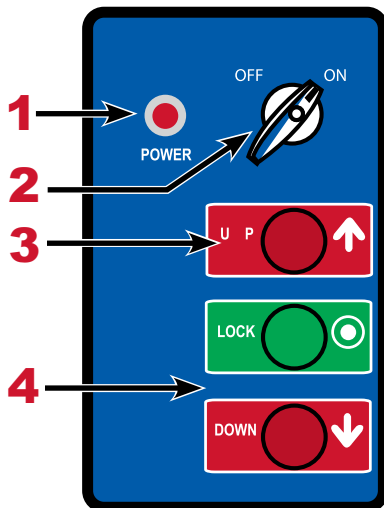


FIGURE 2 (Layout Drawing)



PSE 12,000 BP Controls:



1. **Power LED** - Light is on when key is turned to "ON".
2. **Key Switch** - Must be in "ON" position for the Power Unit to be powered on.
3. **UP Button** - Used to raise the Lift
4. **LOCK Button** - Use this button to lower the Lift to the locking point.
5. **DOWN Button** - Used to lower the Lift. When up, push the down button making the Lift first rise and then the locks will open and the Lift will come back down.

STEP 1: Unloading Lift & Checking For Defects

Unload the Lift and place it near the intended installation location. Remove shipping bands and packing materials to allow the Arms and Base Plate to be unpacked. Remove the packing brackets and bolts holding the Columns to the end plates (the end plates are shipping purposes only).

The Lift should be installed on a level floor with a minimum 4" - 6" of 3,000 psi concrete (sufficiently cured). Visually inspect the floor, **the Lift should not be installed on cracked concrete or over expansion joints**. The installed Lift will only be as strong as the foundation on which it is installed. It is best to test drill where the Lift is to be installed to verify the depth of the concrete. The Lift must be installed on basement level or ground level of building.

STEP 2: Measuring Lift Area & Positioning

Note: For illustration purposes (in Figure 2) we used a 25' Foot Installation Bay (or installation area). Your installation area may vary.

1. Snap a chalk line down the center and the full length of the installation bay. This will be your Center Line.
2. Snap a chalk line across your installation bay where you want the center of your Columns to be. This is the Midline (See Figure 2). Make sure this Midline mark is parallel to the front and back of your door or installation area, as all other measurements are based on correct positioning of the Midline.
3. From the Midline, measure 68¼" to one side and make a mark, then measure from the marked line 136½" to the other side and make another mark. (See Figure 2).
4. Measure 7 7/8" from the front and rear of the midline on both sides and snap two parallel lines (as in Figure 2). The line located at the "Back Side" of the Lift is the Base Line. (See Figure 2).

You should have a square layout area exactly like Figure 2. This is where you will install the Lift now.

STEP 3: Positioning & Leveling Columns, Installing Cable Sheaves

This Lift requires a minimum 9' 2" ceiling height (you should allow as much room as possible though, this is the height of the Columns themselves, and does not account for the roof height of the vehicle which you will be lifting!). NOTE: The 9'2" height is the Column itself, when raised to the highest setting, the Carriage on the PSE 12,000 BP will protrude several inches out of the top of the Column.

First, before you stand the Columns up, bolt the Pulley Mounts to the top of each Column (this can be done after the Columns are stood up, but is much easier while they are laying down). The Pulley should be on the same side as the Cable Anchor Eyelet on the Carriage (see pictures below).

Continued Next Page



This is how the Pulley Mount should be attached to each Column, so that the Pulley is on the same side as the Cable Anchor Eyelet. (Do not install the Cables at this time)



STEP 3: Positioning & Leveling Columns, Installing Cable Sheaves (Continued)



While the Columns are laying down you should also mount the Power Unit. For instructions, see Page 14.

Raise the Columns to vertical. Position them on either end of the layout square (See Figure 2). The Power Unit Column will be on the right side (passenger side) of the layout square for standard settings or the driver's side if needed. (The passenger side is recommended for easy operation.)

Examine the area where the Base Plates of the Columns are going to be anchored to the floor. Anchor holes in the Base Plates should be at least 4" from any expansion joints or large cracks in the floor.

Stand the Columns up so that the Power Unit side will be on the vehicle passenger side. (See Figure 2). Use your four foot level, and the provided $\frac{3}{4}$ " Flat Washers and Shims, shim the Columns level, front-to-back and side-to-side. Re-check the Columns to see that they are facing each other square. If not, rotate the Columns as needed and be sure to keep the Column Base Plates even within your layout square.

Position the steel Base Plate between the posts in the mounting slots (Figure 3), do this to ensure Columns are correct distance apart before anchoring. This step is to ensure the Base Plate will slide into position later in the installation process.

Check for clearance in the front and rear to be sure that when a car is on the Lift the garage door will open (we recommend a 23' foot clear area) (See Figure 2).

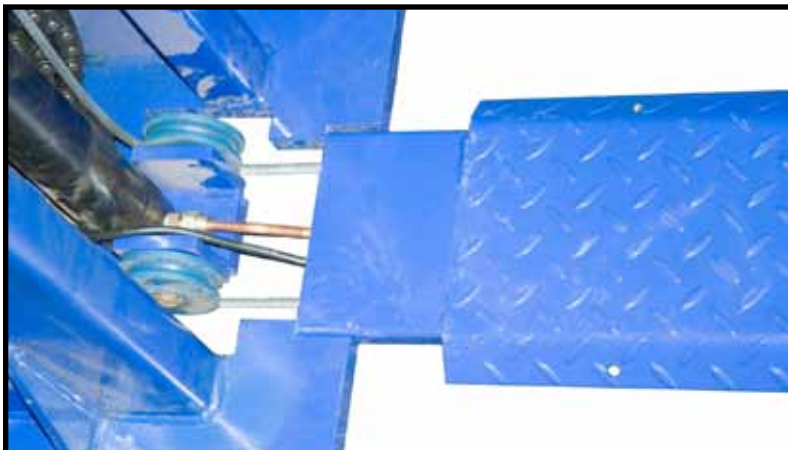


FIGURE 3 (Correct positioning of the Base Plate)

Leave the Base Plate in place, while drilling and installing in the anchor holes.

This will ensure the proper distance between Columns and prevent the Columns from shifting while anchoring.



**DOUBLE-CHECK
EVERYTHING NOW
THE NEXT STEP IS PERMANENT!**

STEP 4: Installing Anchor Bolts & Re-Leveling Columns

You will need a rotary hammer drill with a $\frac{3}{4}$ " carbide masonry bit (most rental outlets carry them). The concrete floor must be at least 4" - 6" thick and a minimum of 3,000 psi. Drill through the fourteen 1-inch holes into the concrete, drilling all the way through the floor. Install the nut and flat washer on the Anchor bolt before putting them in the holes. Be careful not to move the columns when drilling. One-way to avoid this, is to drill the holes and place the bolts in, one at-a-time, saving the inside hole for last.

Note: After you put the anchor into the drilled hole to keep the sleeve on the anchor from pulling up through the plate on the bottom of the lift place 1 "U" shaped shim between the Bottom Plate of the Lift and the cement around the Anchor. The Shim will keep the Sleeve from pulling up when you tighten the Anchor. In some cases the threads on the Anchors will be exposed above the base of the Lift 2" – 2 $\frac{1}{2}$ " when they are tightened, this is normal.

Recheck the level of each Column and place Shims around each Anchor and wherever they're needed. **If $\frac{1}{2}$ inch or more of Shim is required, either refinish concrete or use steel plates and extra long anchor bolts (FOR EXTRA PLATES OR LONGER ANCHORS CALL YOUR LIFT DISTRIBUTOR).** Tighten anchor bolts and recheck for level and plumb. Hammer the Anchor Bolts all the way down.



Tighten Anchor Bolts using a torque wrench to 125 ft. / lbs. (DO NOT use an air, electric or battery impact gun when tightening the Anchor Bolts!)

NOTE: 4" - 6" of reinforced concrete is the minimum requirement for installation area.

Recheck the level of the Columns. If the Columns are off level at this point, loosen the Anchors and use a pry bar to tilt the Columns and Shim as needed. Retighten and check again. When satisfied as to level, tighten all the Anchor Bolts. It is best to hold the top of the Anchor Bolts, with vice type pliers to then tighten down. You must re-torque your anchors every 30 days to insure they are tight.

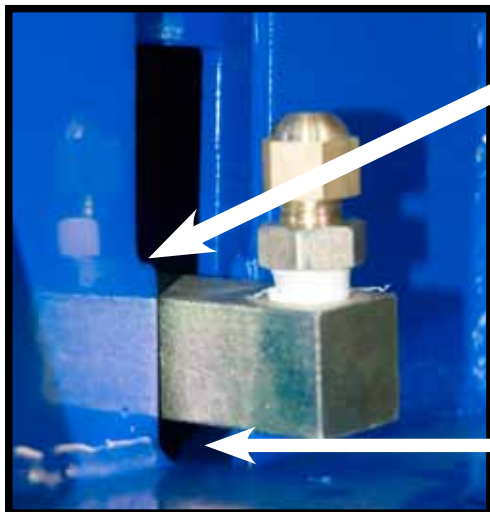
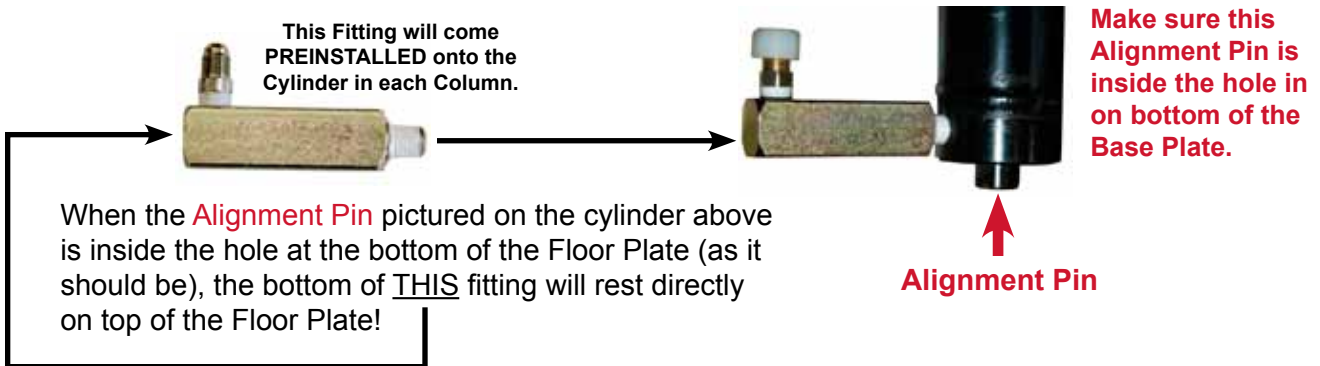
After all Anchors are installed, remove the center Base Plate out of the way so you can run the Cables, Hose & Safety Lock Wire.



ATTENTION!!! PLEASE READ!

ENSURE THAT THE FITTING BELOW IS SEATED PROPERLY BEFORE PROCEEDING WITH INSTALLATION

The fitting at the bottom of each Column needs to be checked before operating this Lift. When transported, or when you raise up the carriages, there will be a small chance that the cylinder may move from its proper location. The fitting shifts up from its proper position and rests on the lip of the Column's slot, as noted in the picture below. The fitting attaches directly to the bottom of the cylinder, to reset the fitting, simply shift the cylinder over until the fitting drops into proper position. Cracked or broken fittings are not covered under your warranty, make sure you follow these steps.



THE BOTTOM OF THIS FITTING MAY GET STUCK ON THIS LEDGE! MAKE SURE TO CHECK THIS BEFORE OPERATING THE LIFT!

There should be NO gap between the bottom of the fitting and the Floor Plate (the picture to the left is INCORRECT!), it should rest on the surface of the Base Plate!



In the picture above, the Cylinder is seated onto the Floor Plate correctly.

STEP 5: Installing & Adjusting Equalizer Cables

The installation of the Sheaves on the PSE 12,000 BP is very simple. Using at least two people, lift each carriage to the second or third Lock. Allow each carriage to rest on the Lock and measure each side to be sure they are at the same height. In some cases remove the two $\frac{3}{4}$ " inch lock nuts from the Cables. Place the Nuts on each carriage for easy access when needed. **Be sure each carriage is at the same height by measuring from the top of the base plate to the bottom of the carriages. This dimension must be within $\frac{1}{4}$ " inch on each side.**

Take one Cable and run it straight across to the other Column.

NOTE: The Cables should never cross. If the Cable is on the backside of the Lift, it will be on the backside of the Lift on the opposite side as well.

Run the Column under the Pulley at the bottom of the Column, straight up the Column to the top Pulley, route the Cable around this Pulley then straight back down to the Anchor Eyelet on top of the Carriage. Pull the end of the Cable through the hole. Make sure the other cable end is now sitting in the hole in the other carriage. If you see less than 2" of the Cable end sticking up, you can install a Flat Washer and Nut, otherwise go back to the left side and tighten the Nut more, to take up the slack. Install the other Cable in the same fashion, running it under the bottom Pulley, to the opposite side.

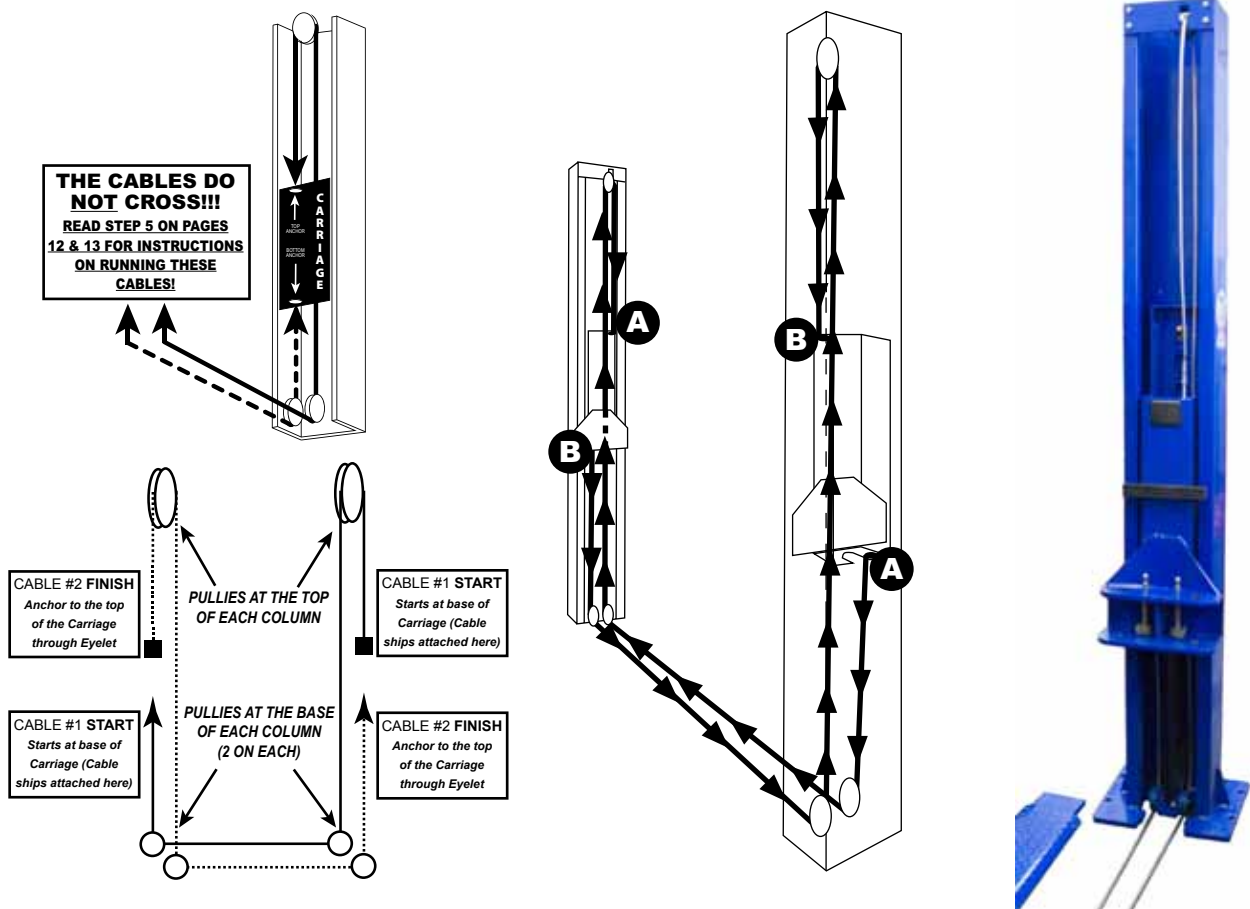


FIGURE 4

Note for Figure 4: Do not over tighten cables. This will cause the lift to lose carrying capacity and could damage the sheaves or cables.

STEP 5: Installing & Adjusting Equalizer Cables (Continued).

Note for Figure 4: Do not over tighten Cables. This will cause the Lift to lose carrying capacity and could damage the Sheaves or Cables.

With both Cables in place, you are ready to adjust. Start on the left side. With a pair of locking pliers, grab the bottom of the Cable end with the threads pointing down. Place a $\frac{3}{4}$ " or $\frac{11}{16}$ " socket or wrench on the Nut and tighten it until the opposite carriage raises a $\frac{1}{4}$ ". Tighten the other side the same way until it comes back down $\frac{1}{4}$ ", then give it one full turn. Both Cables should now have the same tension, much like a banjo string. When the Lift is in operation, the Locks should click at the same time, or close to each other. If not, adjust the Cables as necessary. Ensure all Cables are on all Pullys at all times.

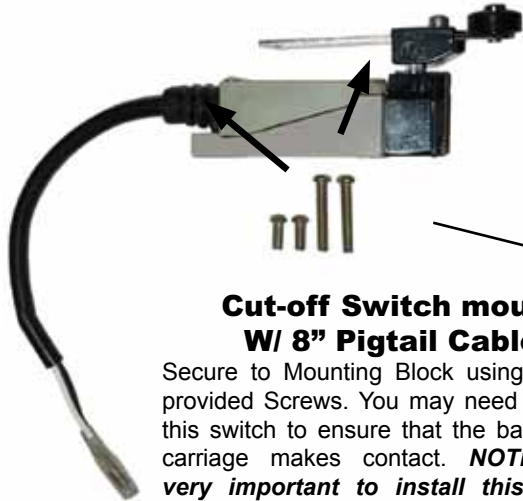


NOTE: IT IS THE CUSTOMER'S OR THE END USER'S RESPONSIBILITY TO MAINTAIN THE PROPER TENSION ON THE EQUALIZER AND/OR OVERHEAD SAFETY RELEASE CABLES. ASKING A PSE QUALIFIED LIFT TECHNICIAN TO RETURN, IN THE FUTURE TO MAINTAIN THE CABLE ADJUSTMENTS, AFTER THE LIFT IS INSTALLED WOULD NOT BE COVERED UNDER WARRANTY, FOR THE ADJUSTMENTS.

STEP 6: Assembly Of Power Unit, Hoses, Wiring, Height Cut-Off Switch & Switch Box

CARRIAGE CUT OFF SWITCH

Using the four provided screws, secure the Cut Off Switch to the Power Unit Column as pictured below. The two short Screws are used on the Cable side, and the 2 long Screws are used to secure the Switch side.



Cut-off Switch mount W/ 8" Pigtail Cable

Secure to Mounting Block using these 4 provided Screws. You may need to adjust this switch to ensure that the back of the carriage makes contact. **NOTE: It is very important to install this cut-off, especially in a low ceiling environment, this helps to prevent the Carriage from coming out the top of the Column and damaging the ceiling or a vehicle.** The wires will be connected to the wires feeding out the bottom of the Switch Box, later in the installation.

Power Unit mount SEE PAGE 16

Switch Box mount

Mount the Switch box using the 4 provided Screws. Remove Cover, and install Screws as pictured below.



Running Hydraulic Hose & Safety Lock Cable

Lay out the 105½" Hydraulic Hose between the Columns. Remove the caps, attached to the Fitting at the base of each Cylinder. Using 2 wrenches, attach the Angled Fittings to either end of the Hydraulic Hose so that they are tight. Now attach both sides of the Hose to the Cylinder fittings, again using 2 wrenches to ensure that they are tight.

Once installation of the Hose is finished, run the 21' (252") Safety Lock Wire Cable down the Column (one end of this Cable/Wire has 2 Plastic Harnesses wired to it, this side will be connected to the Plastic Harness Clip.



Position 8' 9½" (105½") Hydraulic Hose between the Columns

This Hose will run underneath the Base Plate. Also, remove the Caps from the Fittings at the base of each Hydraulic Cylinder as pictured to the right.



Attach Hose to the base of each Cylinder using provided Angled Steel Tubing

Use 2 wrenches as pictured here and ensure that the Hose is attached tightly.



This Connector runs under the steel Base Plate to opposite Column's Safety Lock Connector under the Blue Cover Box.

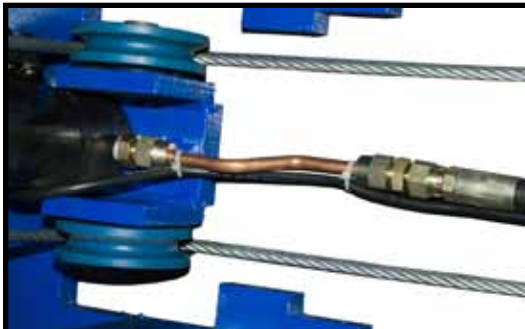
These Connectors run up the Power Unit Column and connects to both the Switch Box and Safety Lock Connectors under the blue cover.



Approx.
21' 8"
(260")

Run 21' 8" (260") Safety Lock Wire Cable to Column opposite the Power Unit

Run the Single Connector side down the Power Unit side Column, through the Cylinder Fitting cut out, around the Cylinder and under the Base Plate to the opposite Column, and back up to the Safety Lock the same way. Use wire ties to attach to Hydraulic Hose.



When finished, secure the Wire to the Hose using the provided Wire Ties

Make sure that the wire to the Safety Lock has a little bit of slack, this will ensure that it will not be pulled out while Lift is in operation. Also make sure that there is plenty of wire to run up the Power Unit Column and attach to the Connector coming out of the Gray Electrical Control Box (which is installed in the next step on Page 16).

REINSTALL SAFETY LOCK COVERS ON EACH SIDE & SECURE Base Plate IN BETWEEN COLUMNS.

Wiring The PSE 12,000 BP

Use the pictures below for reference on pages 17-20.



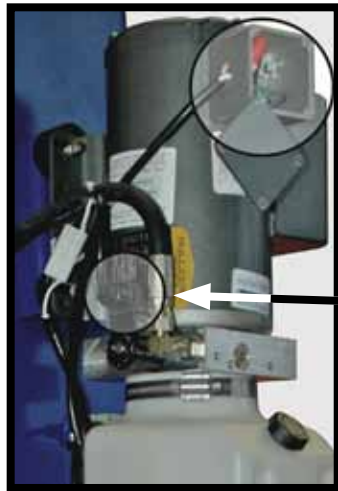
ALL WIRING SHOULD BE DONE BY A QUALIFIED ELECTRICIAN

Power Unit is mounted here using 4 sets of 8mm Bolts, Nuts, Washers & Lock Washers, do not use the 4 rubber Vibration Bolts pictured below.



Mount the Electrical Cut-Off Switch w 8" Pigtail Here. (See Pg. 14)

Gray Electrical Control Box is mounted here (using 4 screws provided in the parts box or attached to the Column here).



This DIN Connector may come pre attached to the Power Unit. If it is not, simply remove the red plug from the male connector on the Power Unit and connect the DIN connector and tighten the phillips screw on top of the DIN connectors (This DIN will only connect one way).

The Matching Male Connector runs out of the Gray Electrical Control Box with a 4' 6" (54") Cable and the larger plastic electrical connector.



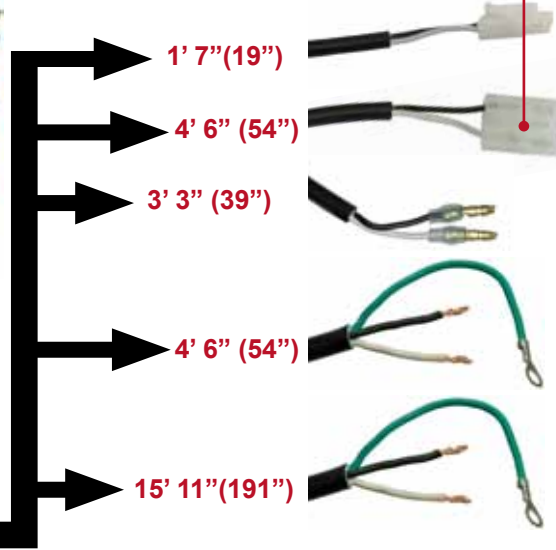
This Male Connector is attached to the matching Female connector on the 21' 8" (260") Cable on the side with the 2-Way fitting. (See Page 15).

This 4'-5½" (53½") Cable w/ Male Connector is attached to the matching Female connector running off of the Power Unit (See description above).

These 2 Male Connectors are Attached White to White, Black to Black, to the matching Female Connectors running off of the Cut Off Switch (See Page 14 for instructions on mounting the Cut Off Switch).

The 4' 6" (54") Electrical Cable is wired to the Power Unit (See Pages 17-20).

The 15' 11" (191") Electrical Cable is for your main power supply. The SL 12,000 BP requires a dedicated 220 V Single Phase 30 Amp power supply. (See Page 17 for more details). **WARNING: 3 Phase & Stinger applications contact a qualified electrician.**



Mounting The Control Box

In order to mount the Electrical Control Box, you must first remove the Gray Electrical Control Box cover by loosening the 4 Phillips screws with plastic heads. Then, using the second set of provided screws (These will be found in the parts box or screwed into the Mounting Plate on the Power Unit Side Column), screw one into each of the 4 holes, securing the Box to the Column. Once this is finished, reattach the Cover to the Gray Electrical Control Box, by tightening the 4 screws, with plastic heads (Snugly - DO NOT OVER TIGHTEN!). Reference the pictures on page 14 for details.

Connecting Wires From The Control Box

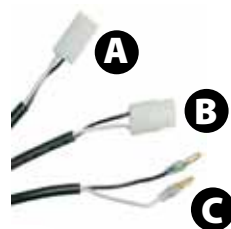
There are 5 cables running out of the bottom of the Control Box. The 15'-4" (184") Electrical Cable is for your main power supply to your main power source (this should be wired to a Male Plug or Junction Box by your electrician). The 4'-6" (54") Electrical Cable will be connected to the Power Unit, as explained on Pages 19 & 20.

The other three Cables can be quickly attached to their matching connectors. **(See Pictures Below)** The 21'-8" (160") Cable which was ran in the last step, to the opposite Safety Lock, under the Blue Cover, is now connected to the Connector coming out of the Gray Electrical Control Box **(Picture A at the bottom of this page)**. Next, there is a 3'-3" (39") Cable, which has 2 separate Metal Connectors **(Picture C below)** which needs to be connected to the Cut-Off Switch, mounted to the Column as explained on page 14 (White Wire to White Wire, Black Wire to Black Wire). The final 4'-6" (54") cable, with the large plastic connector, **(Picture B below)** is connected to the matching connector, running out of the Valve Control, on the side of the Power Unit (See Pages 19 & 20 for details).

USE THE PICTURES TO THE RIGHT TO FIND THE LOCATION OF EACH CONNECTOR.

The 5 Cables that run out of the bottom of the Gray Electrical Control Box should be connected as pictured to the right. Follow the instructions above and use these pictures to ensure that the Cables are properly connected.

Picture "D" Shows the electrical hook up for the Power unit. Refer to pages 19 & 20 for more information!



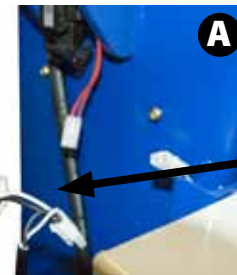
"D" NOT PICTURED ABOVE
SEE PAGE 16 FOR MORE DETAILS
ON CABLE/WIRE LOCATIONS)



SAFETY SWITCH



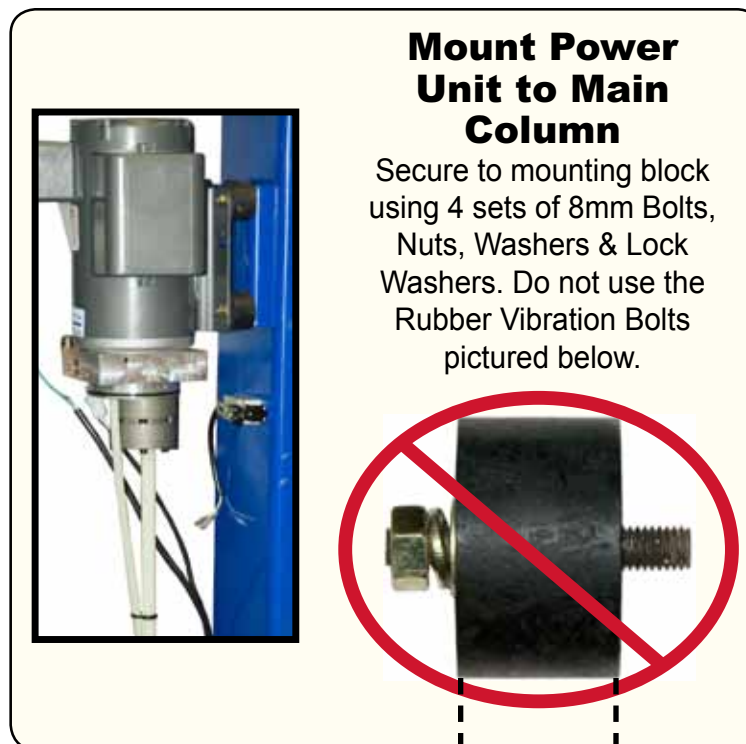
REMOVE COVER ON POWER
UNIT (SEE PG. 19 & 20)



THIS IS THE 3-WAY CABLE RAN UNDER THE BASE PLATE ON PAGE 15, IT WILL BE CONNECTED TO 1 CONNECTOR COMING OUT OF THE GRAY ELECTRICAL CONTROL BOX AND 1 CONNECTOR COMING OUT OF THE SAFETY LOCK (UNDER THE BLUE COVER) ON THIS COLUMN.

Wiring The Power Unit

The 15'-11" (191") Electrical Cable will be wired to a Male Plug or Junction Box. The PSE 12,000 BP requires a Dedicated 220 V Single Phase 30 Amp Power Supply. The 4'-6" (54") Electrical Cable will be wired into the Power Unit (See Pages 19 & 20 for details). ALL PSE 12,000 BP WIRING SHOULD BE DONE ONLY BY A QUALIFIED ELECTRICIAN! Power should not be ran to the Power Unit until all other wiring has been completed and the Reservoir has been filled with hydraulic oil. Use (AW-32 Hydraulic Oil or Dexron III Automatic Transmission Fluid or Equivalent). The Lift should be cycled all the way to the top and back down 2 or 3 times to make sure all parts operate smoothly under load, all of the air is pushed out of the Hydraulic Hoses, and that all Safety Locks work properly.



Mount Power Unit to Main Column

Secure to mounting block using 4 sets of 8mm Bolts, Nuts, Washers & Lock Washers. Do not use the Rubber Vibration Bolts pictured below.

1/2"

THICKNESS

(QTY. OF 4 REQUIRED)

**IT IS IMPERATIVE THAT
THE POWER UNIT HAS 1/2"
SPACERS BENEATH ALL
FOUR MOUNTING BOLTS**

Monarch



Do not hold the Down Button or the Release Lock Handle Button more than 30 seconds to let the lift down. This will cause the coil to burn up from getting to hot which will void the warranty.

DO YOU HAVE THIS STYLE HYDRAULIC POWER UNIT?

IF SO, SEE NOTES BELOW!

(INSTALLATION OF THE ELECTRICAL TO THE POWER UNIT IS TO BE DONE ONLY BY A CERTIFIED ELECTRICIAN. BEFORE THE POWER UNIT IS INSTALLED, HAVE THE ELECTRICIAN WIRE A QUICK DISCONNECT BETWEEN THE MAIN POWER BREAKER BOX AND THE CONTROL BOX, THEN HAVE THIS QUICK DISCONNECT MOUNTED TO THE SIDE OF THE COLUMN NEXT TO THE POWER UNIT).

Remove the junction box cover on the motor by removing the short screw. Run your electrical power wires from the main breaker box with 220 volt single phase on a Dedicated 20 Amp Breaker.

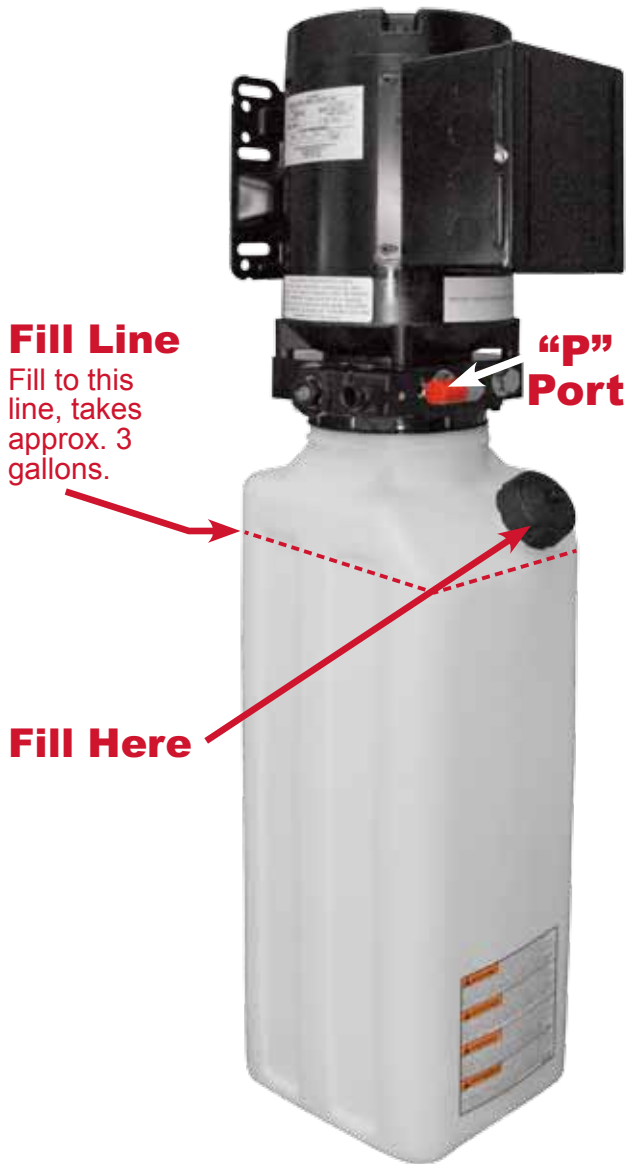
Remove the knock out hole on the side/top (depending on the type of Power unit) electrical box on the motor. Line the hole with a Strain Relief. Now run your main power wires through the knock out hole on the side/top of the Motor Junction Box (commonly referred to as the "Pecker Head") to make the electrical connection to the switch wires inside the box.

SEE PAGE 17 OR 18 FOR WIRING TO SWITCH, DEPENDING ON IF YOU HAVE A KEY SECURITY CONTROL BOX.

Attach the Green wire to the ground screw on the motor in the back of the Power Unit junction box.

Put the junction box cover back on after the wiring is complete.

SPX



Do not hold the Down Button or the Release Lock Handle Button more than 30 seconds to let the lift down. This will cause the coil to burn up from getting to hot which will void the warranty.

⚠ "P" Port



The SPX Power Unit's "P" Port may be referenced in the manual, if you have an SPX Power Unit, it may or may not be labeled, use this picture to locate it.

DO YOU HAVE THIS STYLE HYDRAULIC POWER UNIT?

IF SO, SEE NOTES BELOW!

(INSTALLATION OF THE ELECTRICAL TO THE POWER UNIT IS TO BE DONE ONLY BY A CERTIFIED ELECTRICIAN. BEFORE THE POWER UNIT IS INSTALLED, HAVE THE ELECTRICIAN WIRE A QUICK DISCONNECT BETWEEN THE MAIN POWER BREAKER BOX AND THE CONTROL BOX, THEN HAVE THIS QUICK DISCONNECT MOUNTED TO THE SIDE OF THE COLUMN NEXT TO THE POWER UNIT).

Remove the junction box cover on the motor by removing the short screw. Run your electrical power wires from the main breaker box with 220 volt single phase on a Dedicated 20 Amp Breaker.

Remove the knock out hole on the side/top (depending on the type of Power unit) electrical box on the motor. Line the hole with a Strain Relief. Now run your main power wires through the knock out hole on the side/top of the Motor Junction Box (commonly referred to as the "Pecker Head") to make the electrical connection to the switch wires inside the box.

SEE PAGE 17 OR 18 FOR WIRING TO SWITCH, DEPENDING ON IF YOU HAVE A KEY SECURITY CONTROL BOX.

Attach the Green wire to the ground screw on the motor in the back of the Power Unit junction box.

Put the junction box cover back on after the wiring is complete.

STEP 7: Installing Lifting / Swing Arms

For standard setting, slide the Two Stage Long Lifting (Swing) Arms between the end of the C Bracket on the Carriage closest to the vehicle approach side of the Lift, and slide the 2 Stage Short Lifting (Swing) Arms onto the Carriage front C Brackets at the front of the Lift. Slide in the 4 long Steel Arm Pins. Attach one or the other (Snap Rings, C-Clips or Roll Pins to the Arm Pins) to ensure that the Pins do not back out of the Lifting Arms in the future. Attach 4 Arm Safety Restraint Gears with the 3 Bolts and Lock Washers to the arms. Ensure they are meshing together correctly & locking the Arms into place. Adjust as necessary to ensure each of the 8 arm restraint gears are locking together to keep the Arms from moving when the Pad is not touching the proper points on the bottom of the vehicle. Review and adjust gears daily or as necessary. Arm restraints are only for holding the Arms in place till the Pad is centered on the proper manufacturers lifting points of the vehicle being lifted.

STEP 8: Installing Swivel Pads & Checking Height Adapters

Should the Pads not be attached to the Arms, drop the four Swivel Pads onto the Arms and test to see that they screw up and down smoothly. The Snap Rings will act as stops to stop the Screw Pads from screwing out.

Note: Truck Adapter Extensions are available in 4" or 6" heights through your lift dealer. In some cases, they are needed on special vehicles or special applications for keeping the vehicle leveled during lifting. Never lift any vehicles without using Truck Adapters when the screw up pad will not reach the proper manufacturers lifting points. When this happens, always use the proper Truck Adapters.

STEP 9: Hooking Up Electrical

Please reference the electrical diagram at the end of this manual for the electrical hook-up. It should be done **ONLY BY A CERTIFIED ELECTRICIAN**. The normal power unit requires 208-220 volts, single phase, on a 30 amp circuit breaker.

STEP 10: Testing & Adjusting Lift

With the power properly hooked up and hydraulic oil in the pump reservoir, push the Red Up button to raise the Lift until it is stopped by the Cut Off Switch contacting the Carriage. Pressing the Green Lock button will lower the Carriages until the first Lock is engaged. To Lower the Lift, press the Red Down button.

NOTE: Pressing the Red Down button will cause the Lift to go up 5"-6" inches before lowering, this is normal and is so that the Locks can be disengaged.

Cycle the Lift several times all the way to the top, then back down, this will get all of the air out of the hydraulic lines, you will see the tank at the bottom of the Power Unit bubbling. When the Lift has hit the ground, hold the down button for 10 seconds, this will cause air to bleed into the tank.

While running the Lift, listen to the Safety Locks clicking. Each side should click simultaneously or with-in a ½ second of each other. If they are not clicking together, then adjust the Cables to compensate by tightening the side that is clicking last at the Cable Bolt at the top of the Carriage. The one that is behind is the one you tighten until you get it clicking simultaneously.

REMEMBER NOT TO OVER TIGHTEN CABLES - THEY SHOULD BE FIRM, MUCH LIKE A BANJO STRING OR A FAN BELT IN A CAR.

GENERAL SAFETY INSTRUCTIONS BY A AUTHORIZED PSE LIFT INSTALLER

- **ALWAYS** make sure the Lift is on the Locks before going under the vehicle.
- NEVER allow anyone to go under the Lift when raising or lowering.
- Care must be taken, as burns can occur from touching hot parts.
- Do not operate equipment with a damaged cord or if the equipment has been dropped or damaged until a qualified serviceman has examined it.
- To reduce the risk of fire, do not operate equipment in the vicinity of open containers of flammable liquids.
- Adequate ventilation should be provided when working.
- Keep hair, loose clothing, fingers, and all parts of the body away from moving parts.
- To reduce the risk of electrical shock, do not use on wet surfaces or expose to rain.
- Use only as described in this manual.
- Use only Manufacturer's Recommended Parts & Authorized Installer.
- ALWAYS WEAR SAFETY GLASSES.
- NEVER allow unauthorized personnel to operate Lift.
- ALWAYS know the gross weight of vehicle.
- NEVER EXCEED CAPACITY OF (12,000 LBS.) ON THIS LIFT.
- NEVER use the Lift to raise one end or one side of vehicle. This will bend the Lifting Arms and void your warranty.
- ALWAYS keep unqualified people away from area, while loading, unloading, raising, or lowering the Lift.
- NEVER allow anyone to ride in the vehicle, while raising, or lowering the Lift.
- ALWAYS keep the area clean and free of water grease, and oil,
- ALWAYS remove wheel chocks, tools, hoses, etc. before loading, unloading, raising, or lowering the Lift.
- NEVER operate the Lift if the Safety Locks are not working properly!
- NEVER operate the Lift without the Stop Snap Rings secured on the Screw-up Lifting Pads.
- Ensure Round Pads or Truck Adapter Pads are evenly centered on the Lifting Frame. Pads that are bent or broken due to misuse or not centered are not covered by Warranty.

LIFT OPERATING INSTRUCTIONS

Swing the Front Arms to the front and the Rear Arms to the rear. Once arms are in position, pull a car into the bay. A general rule of thumb is to stop the car with the center of the wheelbase even with the center of the Columns. (*NOTE: Some vehicles will be heavier in the front due to the engine. In these cases, position the vehicle so that the vehicle's weight distribution on the Lift's Columns is 50% Front to Rear of the vehicle. Swing the four Lifting Arms under the vehicle and position the Lifting Pads under the appropriate lifting points. ***(If you are not sure of the proper lifting points, you should check the vehicle's service manual or contact the vehicle manufacturer).***

Adjust the Screw Pads so they all hit their lifting points at the same time, with full contact to the center of the Pad. This will allow the car to be level when rising. With the Pads in their proper locations and no obstructions around the Lift or vehicle, you may now press the UP Button on the Power Unit or the UP Button on the Key Security Control Box (depending on the type of Lift you have) to raise the vehicle.

Raise the vehicle so that the tires are 6" inches off the ground. Walk to the back of the vehicle and push up and down on the bumper. The vehicle will rock, but should not, *at any time*, lose contact with the Lifting Screw Pads. If the vehicle is bouncing off the Pads or feels at all unstable, you should lower it back to the ground and reposition the Arms & Pads to balance the load. Repeat this process until the vehicle is completely stable. When the vehicle is stable, you may raise the Lift all the way to the top. Listen to Safety Locks clicking evenly and adjust if necessary (Never adjust the Cables without it setting on the Locks).

CORRECTLY USING THE LIFTING PADS:

This Lift's Lifting Pads extend in 3 Stages by screwing up or down. It is important to use the Pads correctly when operating this Lift. ALWAYS make sure that the Pad's screws are raised in the correct order: ALWAYS extend Stage 2 BEFORE extending Stage 3! NEVER Extend Stage 3 without fully extending Stage 2!

Operators must make sure to position the Lifting Pads to the Vehicle Manufacturer's Recommended Lifting Points correctly! The Manufacturer's Lifting Points MUST BE CENTERED on the Lifting Pad. NEVER lift a vehicle when the Lifting Pad only makes contact with the Lifting Point at the edge of the Pad! Always, CENTER the Manufacturer's Lifting Points on the Pad! If the Lifting Pads do not Screw Up high enough to reach the vehicles Manufacture's Lifting Points you should use Truck Adapters to make up the voided space. Truck Adapters can be purchased through your Lift Distributor. Never lift a vehicle without the Pads touching the Manufacturer's Recommended Lifting Points.

CORRECTLY RAISING & LOWERING SCREW-UP PADS:



CORRECTLY CENTERING WEIGHT ONTO THE SCREW-UP PADS 6" OR 4":



OPERATORS MUST ENSURE THAT THE VEHICLE MANUFACTURE LIFTING POINTS ARE CENTERED ON THE LIFTING PAD EVERY TIME THEY LIFT A VEHICLE ON ALL 4 PADS!

THE PROPER OPERATION OF THE LIFT REQUIRES THAT ANY TIME YOU RAISE A VEHICLE TO WORK ON IT, YOU MUST LOWER THE LIFT ONTO THE SAFETY LOCKS. This is done by raising the vehicle to the desired height and lowering the Lift by pressing the Red Button (on the PSE 12,000 BP) until the carriage stops on the next available Safety Lock. Note: The Power Unit is not made to hold the load and may bleed down on the locks - this is normal, ALWAYS let the Lift down onto the Safety Locks. To lower the vehicle, you must first raise the Lift off of the Locks using the UP Button on the Control Box. Then, engage and hold the Red Button on the Key Security Control Box, until the Lift is on the ground. You must pull the Safety Lock Handle to release the Locks after raising up off the Locks then lower the vehicle.

NEVER WORK UNDER OR NEAR THIS LIFT WITHOUT THE LOCKS BEING ENGAGED. THE POWER UNIT IS NOT DESIGNED TO BE A LOAD-HOLDING DEVICE. NOT USING THE LOCKS COULD RESULT IN A PREMATURE FAILURE OF THE CYLINDERS, PUMP AND/OR CABLES AND CAN CAUSE SERIOUS PROPERTY DAMAGE OR PERSONAL INJURY! FAILURE TO HEED THIS WARNING WILL RESULT IN IMMEDIATE TERMINATION OF YOUR WARRANTY.

MAINTENANCE SCHEDULE

The following maintenance is recommended and required in these intervals; accumulated hours or monthly period, whichever comes sooner. If you hear a noise or see any indication of possible failure - cease operation immediately and correct and/or replace parts as required. Following these maintenance procedures is the key to prolonging the useful life of your Lift.

AT ANY TIME, IF YOU ARE NOT SURE OF THE SAFE OPERATION OF THE LIFT, DISCONTINUE USING IT AND CALL YOUR CHSSI AUTHORIZED LIFT INSTALLER FOR ASSISTANCE. **WARNING:** OSHA AND ANSI REQUIRE USERS TO INSPECT LIFTING EQUIPMENT AT THE START OF EVERY SHIFT. THESE AND OTHER PERIODIC INSPECTIONS ARE THE RESPONSIBILITY OF THE USER / OPERATOR.

DAILY PRE-OPERATION CHECK BY OPERATOR

The user should at least perform the following checks daily and not use the Lift if anything is not correct.

- Daily check of all Safety Locks & Arm Restraints - the discovery of device failure could save you from expensive property damage, lost production time, serious personal injury and even death.
- Check Safety Locks for free movement and full engagement with Lift, make sure the Arm Restraint Gears mesh together completely and are working 100% each and every time the Lift is used. If not, do not use the Lift.
- Check Hydraulic Connections, and Hoses for leakage.
- Insure Snap Rings at all Rollers, Sheaves and on all Screw-up Pads & optional Truck Adapters are correct and safe.
- Check All Bolts, Nuts, and Screws and tighten.
- Check Wiring & Switches for damage and that they all work correctly.
- Keep Floor Plate free of dirt, grease or any other corrosive substances.
- Check for any stress cracks in the concrete floor near the Anchor Bolts which, if present, could cause the Anchor Bolts to loosen and pull out of the floor. Do not use the Lift if this is apparent.
- Check daily Anchor Bolts torque to 125 ft-lbs. Do NOT tighten using impact gun. NEVER use the Lift with loose Anchor Bolts! All Anchor Bolts should be the correct torque specifications.
- Ensure all Cables are on all Pulleys at all times.
- Check Equalization Cables: The Cables keep both sides of the Lift equal, allowing the Safety Locks to catch together. If one side of your Lift is running ahead of the other, it is most likely time to adjust your Cables. Follow this simple procedure. Refer to Pages 13 Step 5 for adjustment! So the Locks are always locking everytime.
- All of the Pulleys / Sheaves on your Lift should be sprayed with a light oil, such as WD-40 or similar lubricant, two to three times a year.

WEEKLY MAINTENANCE

- Check anchor bolt torque daily to 125ft. lbs.
- Check floor for stress cracks near anchor bolts
- Check hydraulic oil level.
- Check and tighten all bolts, nuts, and all screws.
- Check all Cables are on all the proper Pulleys at all times.
- Grease the inside of the Columns, where the Carriages run up and down.

YEARLY MAINTENANCE

- All of the Pulleys / Sheaves on your Lift should be sprayed with a light oil, such as WD-40 or similar lubricant, two to three times a year.
- Check all Cables are on all the proper Pulleys each time you use your Lift.
- Change the hydraulic fluid - good maintenance procedure makes it mandatory to keep hydraulic fluid clean. No hard fast rules can be established; - operating temperature, type of service, contamination levels, filtration, and chemical composition of fluid should be considered. If operating in dusty environment a shorter interval may be required.
- Grease the inside of the Columns, where the Carriages run up and down.

All repairs should only be performed by a PSE Authorized Lift Installer.

- Replacement of Hydraulic Hoses.
- Replacement of Cables and Sheaves.
- Replacement or rebuilding Hydraulic Cylinders.
- Replacement or rebuilding Power Unit Pumps / Motors.
- Checking Hydraulic Cylinder Rods and Rod Ends (threads) for deformation or damage.
- Checking Cylinder Mounting for looseness and / or damage.

Relocating or changing components may cause problems. Each component in the system must be compatible; an undersized or restricted line will cause a drop in pressure. All Valve, Pump, and Hose connections should be sealed and/or capped until just before use. Air Hoses can be used to clean Fittings and other components. However, the air supply must be filtered and dry to prevent contamination. Most important - cleanliness - contamination is the most frequent cause of malfunction or failure of Hydraulic Equipment.

Problem	Possible Causes	Suggested Solution
1. Motor won't run	<ul style="list-style-type: none"> • Fuse or circuit breaker. • Incorrect voltage to motor • Wiring connections • Burned out micro switch • Burned out motor windings 	<ul style="list-style-type: none"> • Replace blown fuse or reset circuit breaker • Supply correct voltage to motor • Check and repair or insulate all connections • Replace micro switch • Replace motor
2. Motor runs, won't raise Arms	<ul style="list-style-type: none"> • Open lowering valve • Pump is sucking air • Suction tube is off of Power Unit • Low oil level • Pressure adjust to low 	<ul style="list-style-type: none"> • Repair or replace lowering valve • Tighten all hydraulic line fittings • Adjust or replace suction tube • Top-off tank • Call Technical Service
3. Motor runs, Arms raise but not vehicle	<ul style="list-style-type: none"> • Motor is running on low voltage • Debris in lowering valve • Improper relief valve adjustment • Overloading of Lift • Pressure adjust to low 	<ul style="list-style-type: none"> • Supply correct voltage to motor • Clean lowering valve • Call Technical Support • Check vehicle weight or balance load properly • Call Technical Service
4. Lift settles down slowly	<ul style="list-style-type: none"> • Debris in check valve • Debris in lowering valve • External oil leaks 	<ul style="list-style-type: none"> • Clean check valve • Clean lowering valve • Check for and repair any leaks
5. Lift goes up unevenly	<ul style="list-style-type: none"> • Equalizer cables not properly adjusted • Lift installed on uneven floor 	<ul style="list-style-type: none"> • Adjust cables according to manual • Shim column (not more than 1/2") or adjust swivel pads to compensate
6. Anchor bolts won't stay tight or are pulling out of floor	<ul style="list-style-type: none"> • Cement thickness or strength is insufficient • Holes are too big for anchors 	<ul style="list-style-type: none"> • Remove bad cement, pour new pad per Lift specs in manual • Relocate Lift using the proper size drill bit, or pour anchoring cement into holes to secure anchors
7. Safety latches don't work	<ul style="list-style-type: none"> • Safety not adjusted properly • Safety spring not connected or weak • Flat washer bent too far, squeezing release cable • Safety latch is rusted or frozen 	<ul style="list-style-type: none"> • Raise Lift until safety adjusting bolt appear in window and adjust as necessary • Reconnect or replace safety spring • Bend flat washer away from release cable until it moves freely • Spray penetrating oil on latch and work the latch until it moves freely
8. Cylinder whines or chatters	<ul style="list-style-type: none"> • Dry or tight cylinder seals 	<ul style="list-style-type: none"> • Replace seals or hydraulic cylinder
9. Oil Leaks	<ul style="list-style-type: none"> • Breather End of Cylinder • Rod End of Cylinder • Power unit • Seals bad or rolled 	<ul style="list-style-type: none"> • The piston seal of the cylinder is out. Rebuild the cylinder • The rod seal of the cylinder is out. Rebuild the cylinder • If leaking around the tank-mounting flange, check the oil level in the tank. The level should be two inches below the flange of the tank. Check with a screwdriver • Rebuild the Cylinder
10. Lift jerks going up and down	<ul style="list-style-type: none"> • Air in hydraulic system • Dry or tight Seals 	<ul style="list-style-type: none"> • Raise Lift all the way to top and return to floor. Repeat 4-6 times. Do not let this overheat Power Unit! • Use for 60 day break in period

LIMITED LIFT WARRANTY

**THIS LIMITED WARRANTY IS NOT TRANSFERABLE
FROM THE ORIGINAL RETAIL PURCHASER.**

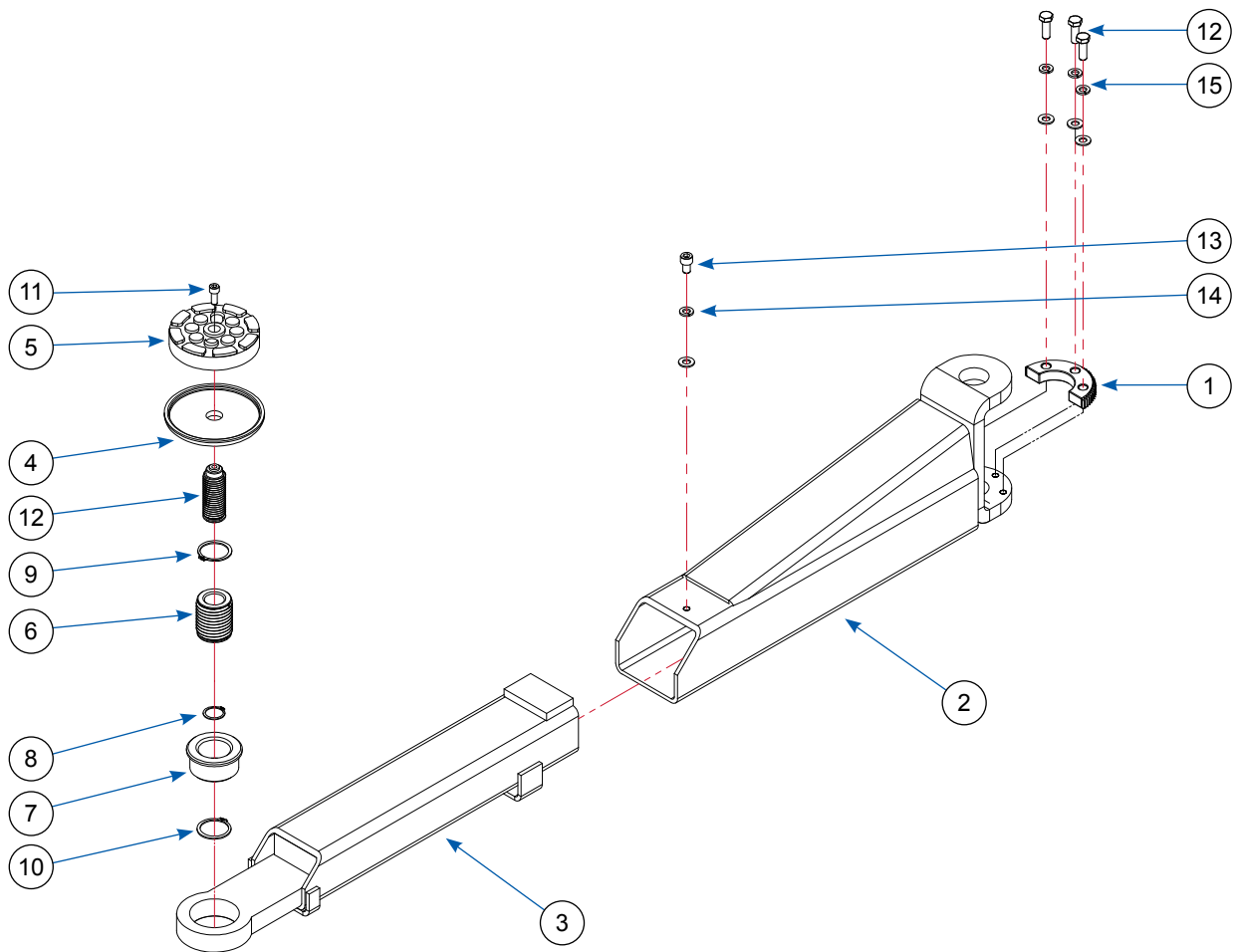
No warranty exists until each piece of equipment is completely paid in full and the Lift Warranty Sheet has been returned to the manufacture or master distributor.

Power Units are covered for defects in workmanship for one (1) year. Any misuse of Power Unit will void this Warranty. For Power Unit Warranty repairs the original purchaser needs to provide the following information: (1) Date code of the Power Unit, (2) Serial Number of the Power Unit, and (3) Model Number. In cases of Power Unit replacements, you will be sent a replacement Power Unit after billing your charge card. It is the Original Purchaser's responsibility to properly drain and box the defective Unit, tag it, and call UPS to pick it up and have it shipped back to us. After receiving the Power Unit back to our facility, an inspection will be made to the Unit to ensure it was defective from the Manufacturer. If it is the manufacturer's defective Unit, we will credit your credit card back, less any shipping. Failure to follow these procedures will void the Power Unit warranty, and any credit to your credit card.

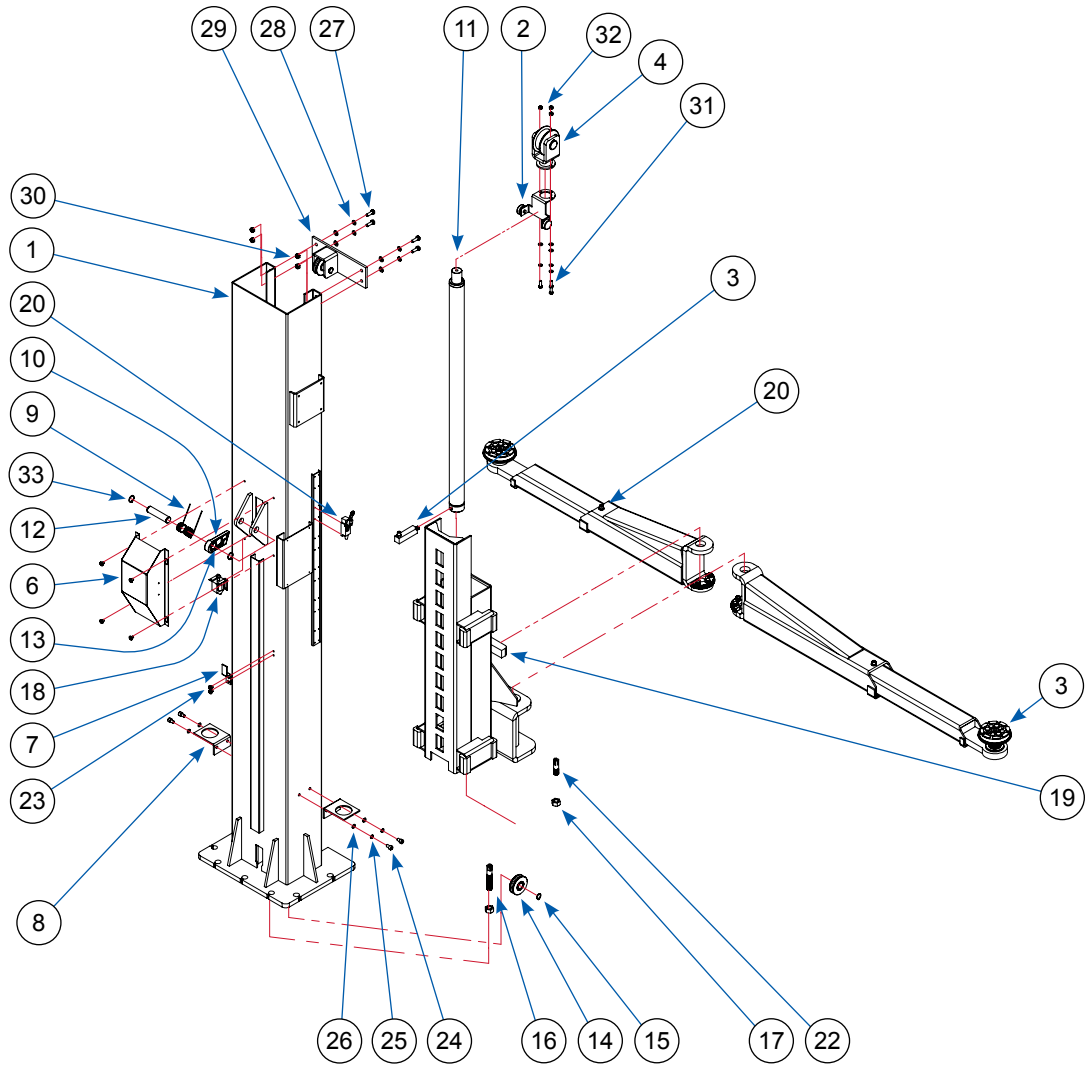
Any wearable Lift part is not covered under warranty, such as Cables, Slide Blocks, Arms, Pullies, Pins, Adapters, Pads, Switches, Hoses, & Fittings **unless authorized by the manufacturer**, and which was not found to have been abused, will be repaired or replaced (at the Manufacturer's option). Defects caused by ordinary wear and tear, abuse, misuse, overloading, accident (including shipping damages), improper maintenance and alterations are not approved by the Manufacturer or Master Lift Distributor are specifically excluded.

The Manufacturer reserves the absolute right to decline responsibility for repair work made or attempted by any Company or Person not associated with, or approved beforehand, by the Manufacturer. This Lift must be installed by a PSE Authorized Installer. Not having this Lift installed by an PSE Authorized Installer could possibly void the Warranty.

**WARRANTY LABOR IS NOT INCLUDED UNDER
WARRANTY. UNLESS EXPRESSLY APPROVED BY
THE MANUFACTURER, IN WRITING, BEFORE THE
REPAIRS ARE ATTEMPTED.**

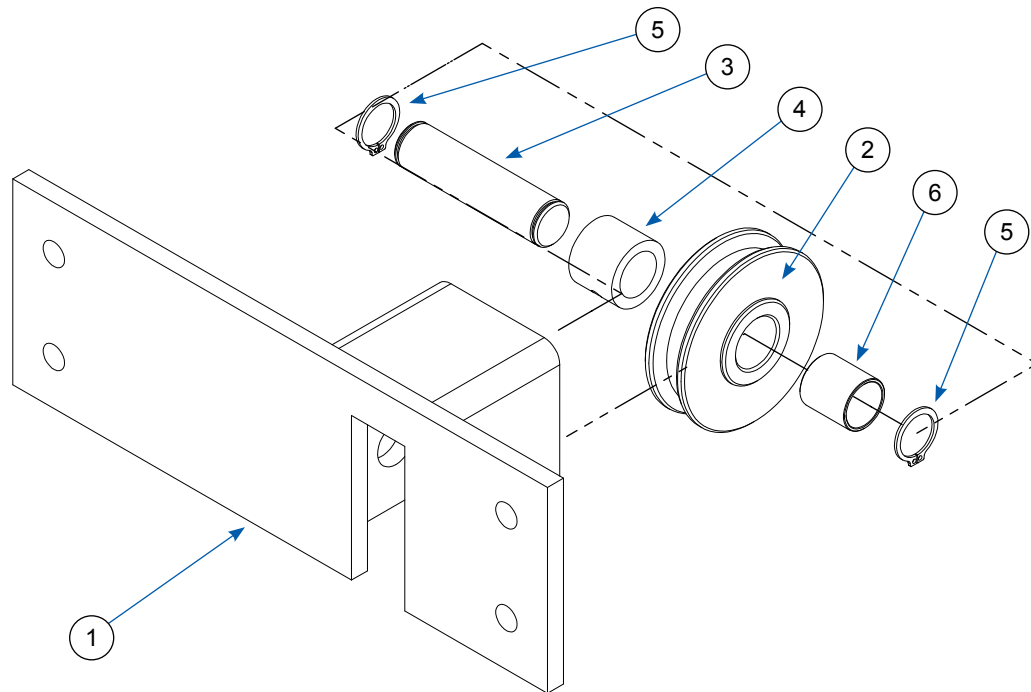


NO.	Description	Dimensions	Number	Qty
1	Half Pound Gear	-	A1030002	1
2	1st Front Arm	6t x 116 x 100 x 565	A7040100	1
3	2nd Front Arm	6t x 100 x 75 x 514	A7040200	1
4	Adjustable Arm Support	Ø133 x 13t	A1030404	1
5	Adjustable Arm Support Rubber	25t x 120 Ø	A1030405	1
6	Adjustable Arm Socket 2	Ø48 x 73	A1030401	1
7	Adjustable Arm Socket 1	Ø80 x 40	A1030401	1
8	Snap Ring	Ø25	P0901025	1
9	Snap Ring	Ø40	P0901040	1
10	Sarah Bolt	M8-25	P01060825	1
11	Hex Bolt	-	P01030820	1
12	Hex Bolt	M10-30	P01011030	3
13	Round Head Bolt	M10-15	P01031015	2
14	Spring Washer	M10	P0302010	4
15	Plain Washer	M10	P0301110	4

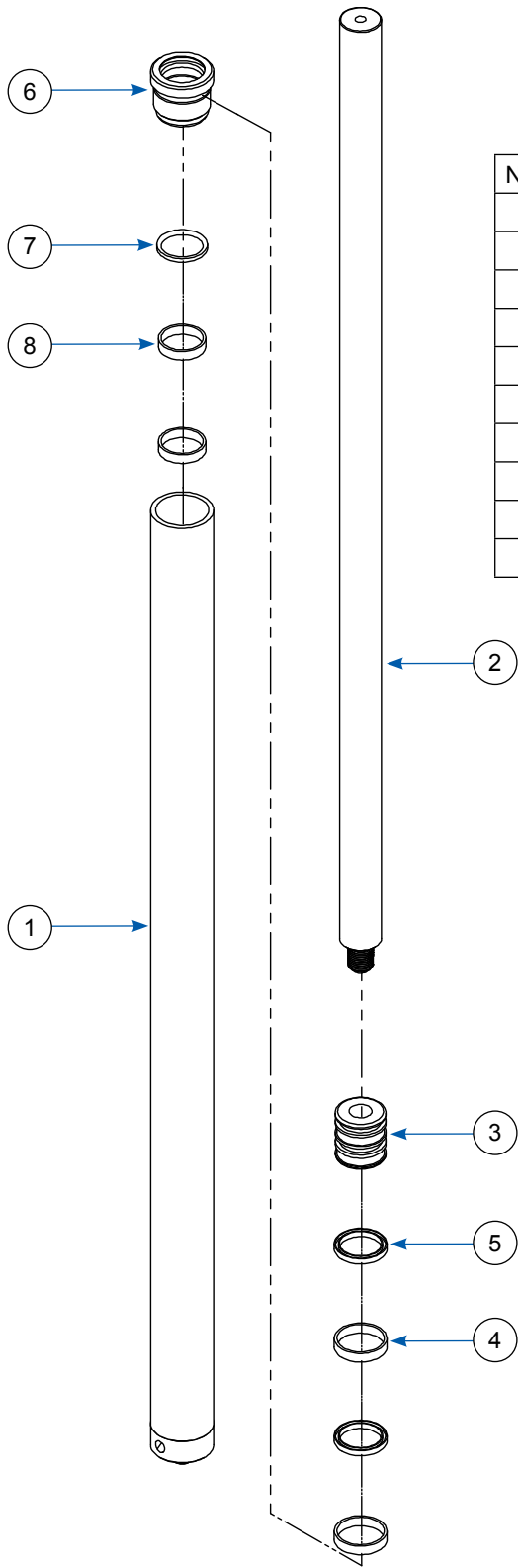


No.	Description	Dimensions	Number	Qty
1	Master Post Assembly	-	A7010100	1
2	Cylinder Support Bracket	-	A7010500	1
3	Cylinder Linkage Block	-	A1010600	1
4	Cylinder Upper Roller Bracket	-	A7010600	1
5	Upper Wire Bracket	-	A6010700	1
6	Lock Safety Cover	1.6t x 183W x 105H x 365L	A1010007	1
7	Remote Control Hanger	3.2t x 23 x 100	A5010003	1
8	Truck Adapter Support	5t x 115 x 100	A5010006	1
9	Lock Release Spring	Ø30 x Ø2 x 15C	A5101005	1
10	Safety Lock	22t x 122 x 50	A1030102	1
11	Hydraulic Cylinder	-	A7010400	1
12	Lock Axis	Ø25 x 110	A1010006	3
13	DU Bearing	DU2515	P2302015	2
14	Wire Wheel	Ø80 x 26	A6010704	4
15	Snap Ring	Ø20	P0901020	4
16	Base Chain Fixing Panel	Ø20 x 96	A6010009	1

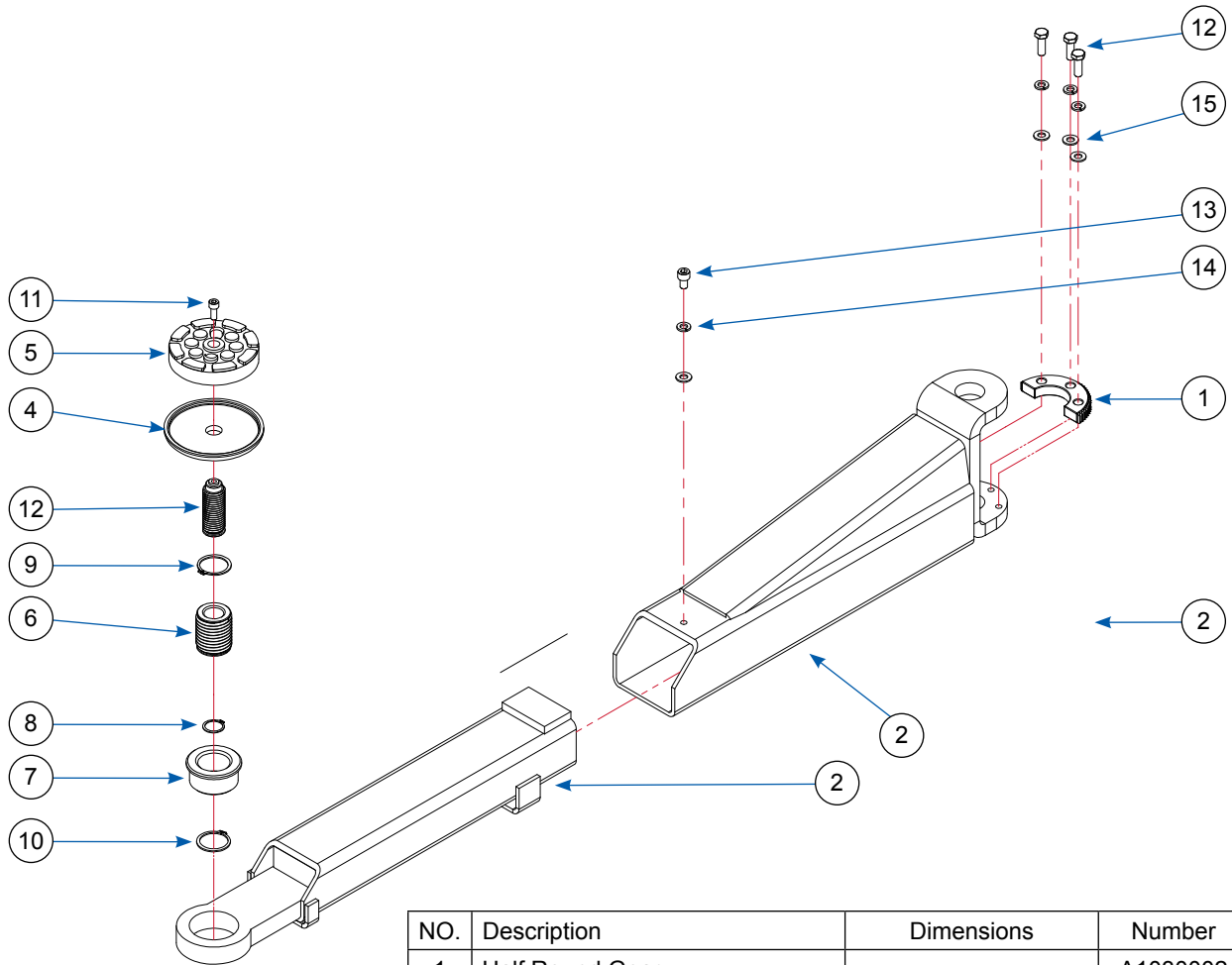
No.	Description	Dimensions	Number	Qty
17	Hex Nut	M20	P0201020	1
18	Safety Solenoid	-	P1902001	1
19	Carriage Assembly	-	A7010300	1
20	Rear Arm Assembly	-	A7030000	1
21	Front Arm Assembly	-	A7040000	1
22	Carriage Chain Linkage	Ø20 x 50	A7010009	1
23	Hex Bolt	M8-10	P1070810	1
24	Round Head Bolt	M10-15	P01031015	1
25	Spring Washer	M8	P0302008	1
26	Plain Washer	M8	P0301108	1
27	Hex Bolt	M10-30	P01011030	3
28	Spring Washer	M10	P0302010	2
29	Plain Washer	M10	P0301110	4
30	Hex Nut	M10	P0201010	4
31	Hex Bolt	M8-25	P01010825	2
32	Hex Nut	M8	P0201008	4
33	Snap Ring	Ø25	P0901025	4



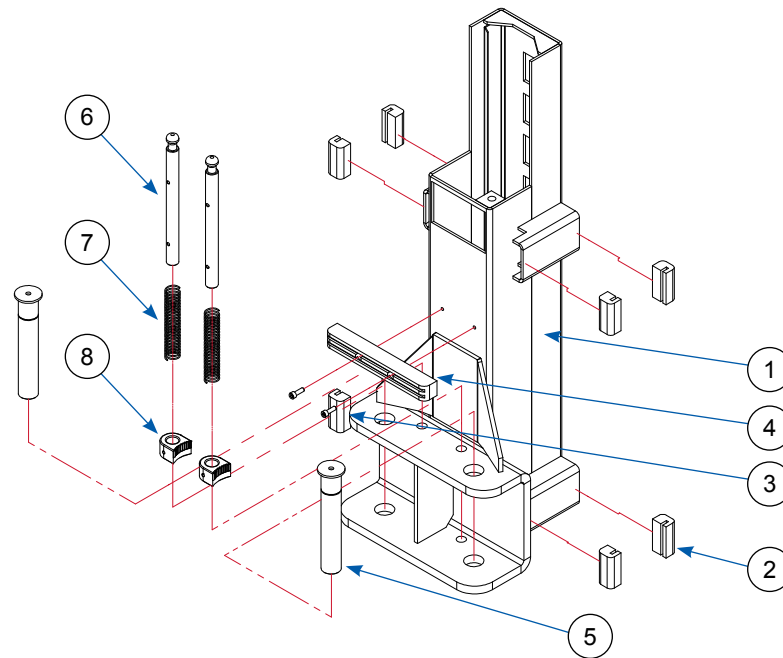
NO.	Description	Dimensions	Number	Qty
1	Cable Pulley Mounting Bracket	-	A6010701	1
2	Cable Pulley	Ø80 x 26	A6010704	1
3	Pulley Shaft	Ø20 x 80	A6010705	1
4	Pulley Adjustable Collar	Ø30 x 24	A6010707	1
5	Snap Ring	Ø20	P0901020	1
6	Pulley Bushing	DU2025	P2302001	1



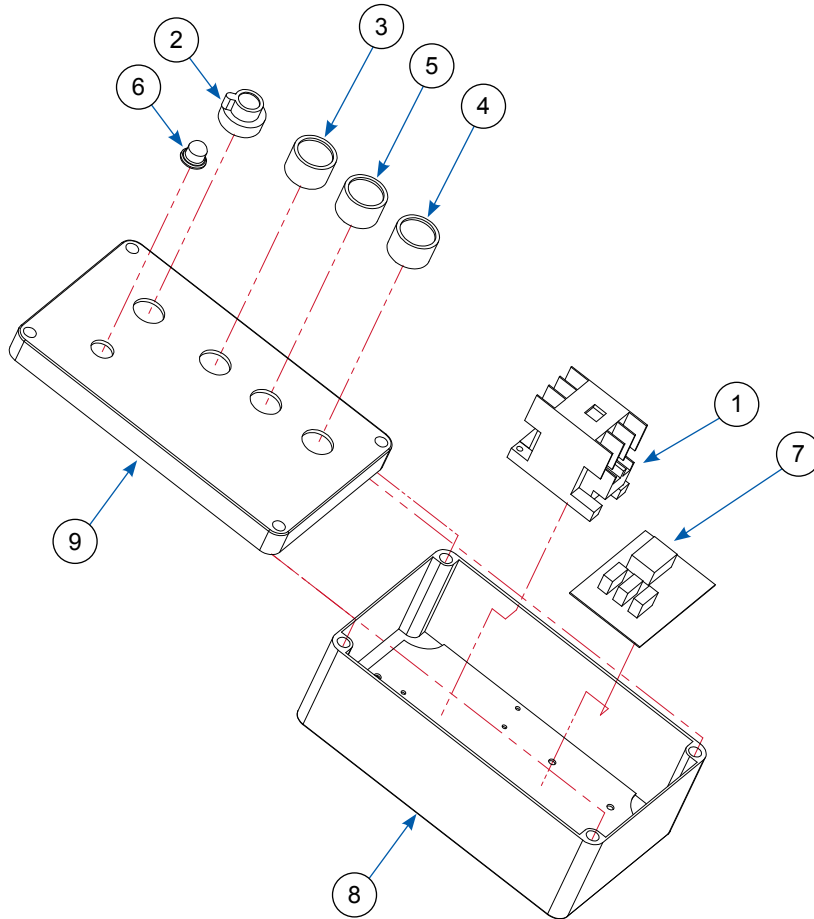
NO.	Description	Dimensions	Number	Qty
	Butt Weldment (Included on #1)	Ø50 x 60L	A1010402	1
	Cylinder Tube (Included on #1)	Ø60 x 1064L (+50L)	6010401	1
1	Cylinder Tube Assembly	NA	NA	NA
2	Cylinder Rod	Ø40 x 1069L	A1010405	1
3	Cylinder Piston	Ø48 x 52L	A1010404	1
4	Poly Pak	B7 Ø50 x Ø40 x 6	P2002001	2
5	Wear Band	Ø40 x Ø45 x 10L	P2003001	2
6	Head	Ø60 x 51L	A1010403	1
7	Rod Wiper	PU6 x 45 x 48.6 x 5.3	P2004001	1
8	Wear Band	Ø45 x Ø50 x 10L	P2003002	2



NO.	Description	Dimensions	Number	Qty
1	Half Round Gear	-	A1030002	1
2	1st Rear Arm	6t x 116 x 100 x 565	A7030100	1
3	2nd Gear Arm	6t x 100 x 75 x 514	7030200	1
4	Adjustable Arm Support	Ø133 x 13t	A1030404	1
5	Adjustable Arm Support Rubber	25t x 120 Ø	A1030405	1
6	Adjustable Arm Socket 2	Ø48 x 73	A1030401	1
7	Adjustable Arm Socket 1	Ø80 x 40	A1030401	1
8	Snap Ring	Ø25	P0901025	1
9	Snap Ring	Ø40	P0901040	1
10	Sarah Bolt	M8 x 25L	P01060825	1
11	Hex Bolt	-	P01030820	1
12	Hex Bolt	M10-30	P01011030	3
13	Round Head Bolt	M10-15	P01031015	1
14	Spring Washer	M10	P0302010	4
15	Plain Washer	M10	P0301110	4



NO.	Description	Dimensions	Number	Qty
1	Carriage	-	A7010302	1
2	UHMW Slide Block	29 x 38 x 76	A1010012	4
3	Carriage Guide	29 x 38 x 76	A1010011	4
4	Rubber Door Protector	36 x 36 x 280	Q0309001	1
5	Arm Fixing Pin	-	A1060101	2
6	Arm Lock Gear Pin	-	A1010014	2
7	Arm Lock Spring	Ø4 x Ø31 x 170	P0901035	2
8	Arm Lock Gear	36t x 50 x 55	A1010013	2



NO.	Description	Dimensions	Number	Qty
1	Control Case	230 x 140 x 20	P1205001	1
2	Control Board	230 x 140 x 75	P1201002	1
3	Power Lamp	-	P1202001	1
4	Direct Switch	-	P1202002	1
5	Bottom Switch	-	P1202003	1
6	Power Lamp	-	P1901001	1
7	Control Board	-	A100000	1
8	Control Case	-	P1909001	1
9	Control Box Cover	-	P1909002	1

ATTENTION: MAIL TODAY TO ACTIVATE YOUR WARRANTY !

WARRANTY IS NON-TRANSFERABLE

Company Name: _____

Owner / Shop Manager: _____

Address: _____

Phone: () _____ Fax: () _____ Cell: () _____

City/State/Province/Zip: _____

E-mail: _____

PSE 12,000 BP

Model No.:	PSE 12,000 BP
Capacity:	12,000 lbs.
Serial No.:	
Date:	



Purchased From: _____ Purchase Date: _____

Address: _____

City: _____ State: _____ Zip: _____

Office Phone: () _____ Cell Phone: () _____

Pro-Series Equipment
P.O. Box 734
Franklin, IN

Pro-Series Equipment
P.O. Box 734
Franklin, Indiana
ATTN: Warranty Dept.

Place
Stamp
Here